

**Some Notes and Observations Concerning  
the Various Varieties of the Pre-Decimal  
Coins from the Island of Guernsey**



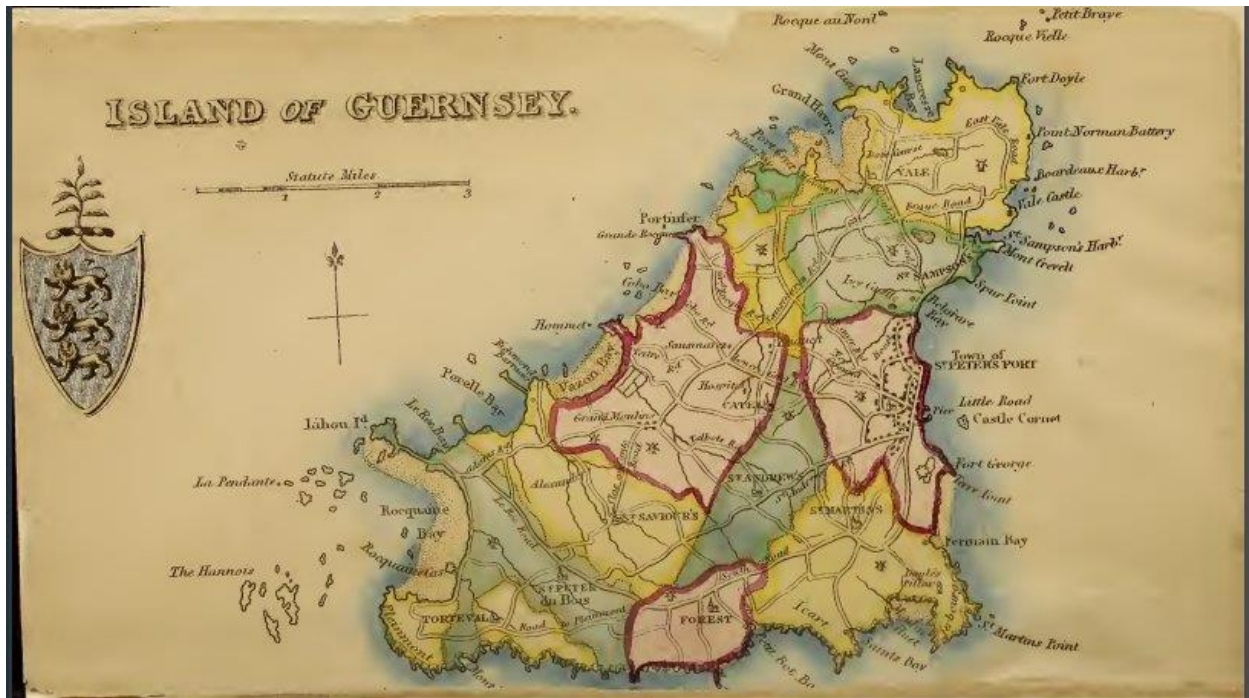
**By**

**Harold Fears**

## Contents

The 1868 Two Doubles.....	5
The 1874 Two Doubles.....	9
The 1889 Two Doubles.....	14
The 1899 Two Doubles.....	21
The 1917 Two Doubles.....	24
The 1929 Two Doubles.....	28
The 1858 Four Doubles .....	32
The 1864 Four Doubles .....	35
The 1889 Four Doubles .....	41
The 1893 Four Doubles .....	51
The 1902 Four Doubles .....	56
The 1911 Four Doubles .....	59
The 1914 Four Doubles .....	62
The 1920 Four Doubles .....	65
The 1945 Four Doubles .....	71
The 1834 Eight Doubles .....	75
The 1858 Eight Doubles .....	78
The 1864 Eight Doubles .....	83
The 1868 Eight Doubles .....	85
The 1874 Eight Doubles .....	92
The 1885 Eight Doubles .....	109
The 1889 Eight Doubles .....	116
The 1893 Eight Doubles .....	119
The 1902 Eight Doubles .....	124
The 1903 Eight Doubles .....	128
The 1910 Eight Doubles .....	131
The 1911 Eight Doubles .....	134
The 1918 Eight Doubles .....	137
The 1920 Eight Doubles .....	140
The 1934 Eight Doubles .....	143
The 1947 Eight Doubles .....	149





From the  
*The Strangers' Guide to Guernsey; Containing Its Situation, Extent and Population ...*  
By James E Collins · 1833

The currency, in which the inhabitants make contracts, and, sometimes, keep their accounts, are livres, sols, and deniers tournois; the word *tournois* being used to distinguish the coin of Tours from that of Paris: but, the latter being abolished, the former seems to have been retained, to mark the difference from sterling, or English currency. Before the time of Elizabeth, the English shilling was

worth only nine sols tournois; in her reign it passed for ten sols; and, in that of James the First, it passed for ten sols and a half. In the beginning of the last century the shilling was worth twelve sols. The currency, now, is chiefly the French and Jersey coinage. The old French crown, if full weight, will pass for six francs, or five shillings; the old French half-crown only passes current for two shillings and threepence halfpenny; the old franc, and half-franc pieces pass; the former for ninepence, and the latter for fourpence each. Other French coins, sufficiently marked, pass current at the same price as in France. English money bears a premium, which vary, according to circumstances. At the present, the price current is seven and a half per cent; yet the silver only passes here at the English prices: although, in the neighbouring Island of Jersey, the shilling passes freely for thirteen pence. The only Guernsey coin are halfpence and doubles; the latter is a small coinage of eight to the penny.

## The 1868 Two Doubles

With a mintage of 35,136 there are two different types of the 1868 two doubles.

### Die Varieties

Type	Additional Source	Variety
1*	Pridmore 56 Exley E23 McCammon G46 i	One Stem
2*	McCammon G46 ii	Similar to Type 1, spine of leaves re-cut
3	Exley E24 McCammon G46 iii	Three Stems Bottom lion higher



**1868 Two Doubles Common Reverse**



**1868 Two Doubles Type 1\***



*One Stem*



**1868 Two Doubles Type 3**



Three Stems



## The 1874 Two Doubles

With a mintage of 45,216 there are two different types of the 1874 two doubles.

### Die Varieties

Type	Additional Source	Variety
1	Pridmore 58 Exley E32 McCammon G47 i	Short Legend. 15.5 mm
2	Exley E33 McCammon G47 ii	Long Legend. 17.5 mm

**1874 Two Doubles Common Obverse**



**1874 Two Doubles Type 1**



*Short Legend. 15.5 mm*



**1874 Two Doubles Type 2**



*Long Legend. 17.5 mm*

**The Narrow and Wide Legends  
Found on the 1874 Two Doubles**



*There are two varieties, one with the short legend and  
one with the long legend.*

## The 1889 Two Doubles

With a mintage of 35,616 McCammon states that there are two different types of the 1889 two doubles. I have documented four different types.

### Die Varieties

Type	Additional Source	Variety
1	Pridmore 60 Exley E45 McCammon G49 ii	Normal spacing in date
2	McCammon G49 i	Repunched 9
3		Repunched 9 Obverse Die Clashing
4		Repunched 9 Obverse and Reverse Die Clashing



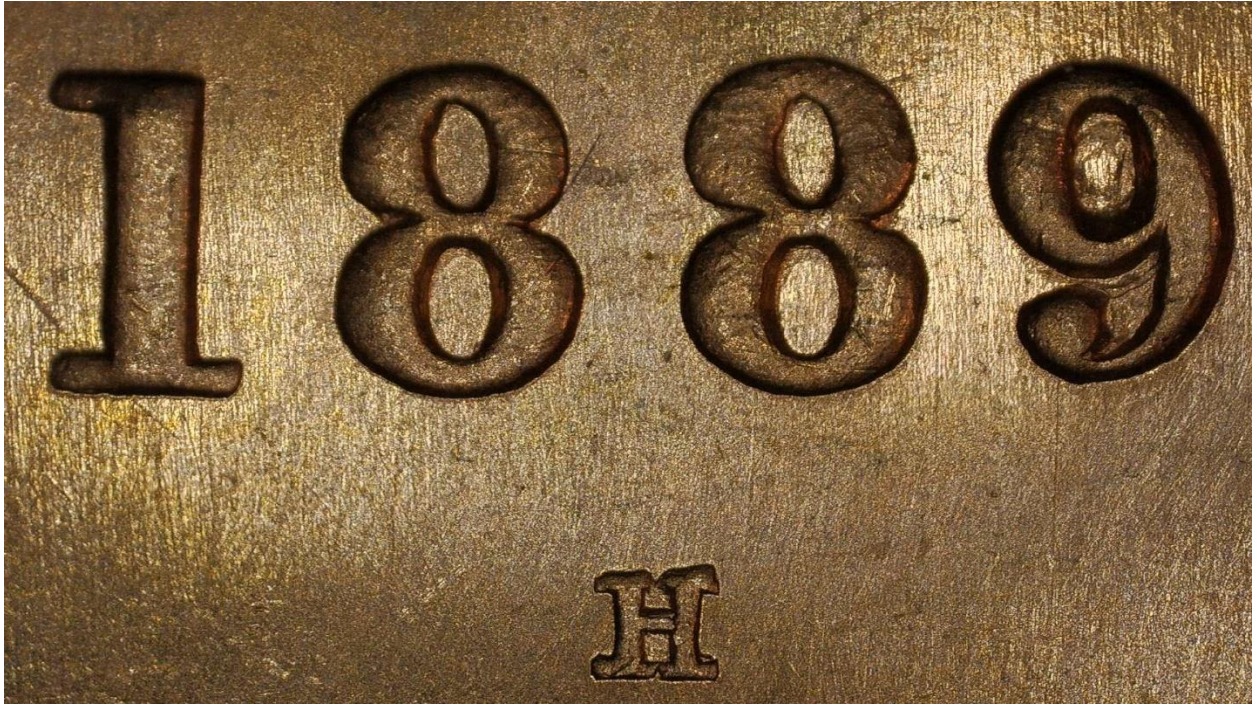
**1889 Two Doubles Type 1**

Normal Spacing with Repunched H



**1889 Two Doubles Type 2**

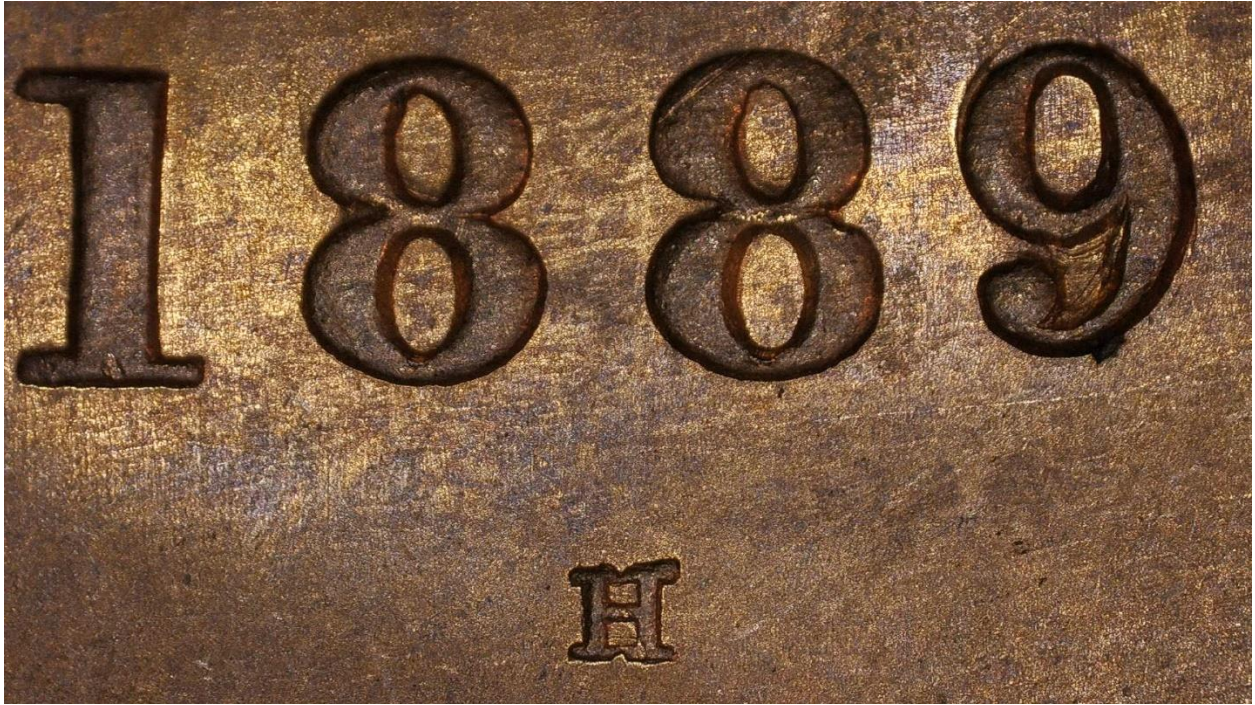
Repunched 9 with Nice H





**1889 Two Doubles Types 3 and 4**

Repunched 9 with Nice H





**1889 Two Doubles Type 4**



*Reverse Die Clashing*

**1889 Two Doubles Types 1 and 2**

No Obverse Die Clashing





**1889 Two Doubles Types 3 and 4**

With Obverse Die Clashing





## The 1899 Two Doubles

With a mintage of 35,636 there are two different types of the 1899 two doubles.

### Die Varieties\*

Type	Additional Source	Variety
1	Pridmore 61 Exley E55 McCammon G50 i	Date spacing 0.5 mm between 9's
2	McCammon G50 ii	Date spacing 0.6 mm between 9's Lower 9
3	McCammon G50 iii	Date spacing 0.8 mm between 9's

**1899 Two Doubles Common Obverse**



**1899 Two Doubles**





## The 1917 Two Doubles

With a mintage of 14,524 there are two different types of 1917 two doubles.

### Die Varieties\*

Type	Additional Source	Variety
1	Pridmore 68 Exley E80 McCammon G57 i	H centrally placed between 9 and the 1
2*	Exley E80A McCammon G57 ii	H nearer to 1

**1917 Two Doubles Common Obverse**



**1917 Two Doubles Type 1**



H centrally placed between 9 and the 1



**1917 Two Doubles Type 2\***



*H nearer to 1*

## The 1929 Two Doubles

With a mintage of 79,100 there are two different types of 1929 two doubles.

### Die Varieties\*

Type	Additional Source	Variety
1	Pridmore 71 Exley E88 McCammon G60 i	H Lower
2*	Exley E89 McCammon G60 ii	H Raised



**1929 Two Doubles Common Obverse**



**1929 Two Doubles Type 1**



*H Lower*



**1929 Two Doubles Type 2\***



*H Raised*

## The 1858 Four Doubles

With a mintage of 114,060 there are two different types of the 1858 four doubles. The coins were minted by Henry Toy & Company.

### Die Varieties

Type	Additional Source	Variety
1	McCammon G35 i	4 on reverse directly above B of DOUBLES
2	McCammon G35 ii	4 on reverse off center above B of DOUBLES



**1858 Four Doubles Type 2**





**1858 Four Doubles Type 2**

4 Off Center



## The 1864 Four Doubles

With a mintage of 212,976 there are five different types of the 1864 four doubles. The coins were minted in 1864-5 by Henry Toy & Company.

### Die Varieties

Type	Additional Source	Variety
1	Pridmore 37 Exley E10 McCammon G26 i	Three stems with wide date  Date has 4 over a 3
2	Pridmore 38 Exley E9 McCammon G26 ii	One stem with wide date
3	McCammon G26 iii	Two stems with narrow date
4	McCammon G26 iv	One stem with narrow date
5*	McCammon G26 v	One stem with narrow date  Reverse has rusty die



**1864 Four Doubles Type 1**

Three Stems



*Three stems with wide date*

*Date has 4 over a 3*

**1864 Four Doubles Type 2**

One Stem



*One stem with wide date*



**1864 Four Doubles Type 3**



*Two Stems*



**1864 Four Doubles Type 1**

Wide date with 4 over 3





**1864 Four Doubles Types 3, 4, and 5**

Narrow Date



**Date Overlay for Type 1 over 3**



## The 1889 Four Doubles

With a mintage of 104,448 McCammon states that there are three different types of the 1889 four doubles. (Pridmore states the mintage as 103,744.) I have documented four different types. They were minted both in 1889 and 1890.

### Die Varieties

Type	Additional Source	Variety
1	Pridmore 42 Exley E47 McCammon G30 i	0.4 mm spacing between 8 and 9 9 raised Clipped 8
2	Exley E46 McCammon G30 ii	0.5 mm spacing between 8 and 9
3	McCammon G30 iii	0.7 mm spacing between 8 and 9 (Wide Date) Repunched 9 Obverse Die Clash
4		0.4 mm spacing between 8 and 9 9 raised; Clipped 8 Obverse Die Clash
5	McCammon G30 iii	Same as Type 3 No Obverse Die Clash



**1889 Four Doubles Type 1**



*Second 8 'Clipped' With Repunched High 9*

**1889 Four Doubles Type 2**



*Aligned Date*



**1889 Four Doubles Type 3**



*Wide Date with Repunched 9 with Striations*

*Obverse Die Clash*



**1889 Four Doubles Type 4**



*Second 8 'Clipped' with Repunched High 9*

*Obverse Die Clash*



**1889 Four Doubles Types 1 and 4**

Second 8 'Clipped'  
Repunched High 9



**Type 2**

Aligned Date





**1889 Four Doubles Type 3**

Wide Date with Striations  
Repunched 9



**Type 3 Over Type 1**





**1889 Four Doubles Common Obverse**





**1889 Four Doubles Type 3**

Obverse Die Clash



**1889 Four Doubles Type 5**

No Obverse Die Clash





**1889 Four Doubles Type 4**

Obverse Die Clash





## The 1893 Four Doubles

With a mintage of 52,224 there are two different types of the 1893 four doubles.

### Die Varieties

Type	Additional Source	Variety
1	Pridmore 43 Exley E51 McCammon G31	Clear H
2		Fuzy H Slightly repunched 9 in date

**1893 Four Doubles Common Obverse**





**1893 Four Doubles Type 1**



*Clear H*

**1893 Four Doubles Type 1**

Clear H





**1893 Four Doubles Type 2**

Fuzzy H / Repunched 9



## The 1902 Four Doubles

With a mintage of 104,534 there are two different types of the 1902 four doubles.

### Die Varieties

Type	Additional Source	Variety
1	Pridmore 44 Exley E58 McCammon G32 i	9 higher in date, 0 lower
2*	McCammon G32 iii	9 lower in date, 0 higher



**1922 Four Doubles Common Obverse**



**1902 Four Doubles Type 1**



*9 higher in date, 0 lower*



## The 1911 Four Doubles

With a mintage of 52,267 there are two different types of the 1911 four doubles.

### Die Varieties

Type	Additional Source	Variety
1	Pridmore 49 Exley E74 McCammon G37 i	Large H
2	McCammon G37 ii	Small H; 11 in date slightly raised

**1911 Four Doubles Common Obverse**





**1911 Four Doubles**



## The 1914 Four Doubles

With a mintage of 209,067 there are two different types of the 1914 four doubles.

### Die Varieties

Type	Additional Source	Variety
1	Pridmore 50 Exley E78 McCammon G38 i	Narrow date
2	McCammon G38 ii	Wide date; second 1 in date slightly raised



**1914 Common Four Doubles**



**1914 Four Doubles**





## The 1920 Four Doubles

With a mintage of 156,800 there are two different types of the 1920 four doubles.

### Die Varieties

Type	Additional Source	Variety
1	Pridmore 52 Exley E85 McCammon G40 i	Wide date
2	McCammon G40 ii	Narrow date

**1920 Four Doubles Common Obverse**





**1920 Four Doubles Reverse Type 1**



*Wide date*

**1920 Four Doubles Reverse Type 2**



*Narrow date*











## The 1945 Four Doubles

With a mintage of 96,000 there are two different types of the 1945 four doubles.

### Die Varieties

Type	Additional Source	Variety
1	Pridmore 53 Exley E96 McCammon G41	Without striations
2		With strong striations

**1945 Four Doubles Common Obverse**





**1945 Four Doubles Reverse Type 1**



*Without striations*



**1945 Four Doubles Reverse Type 2**



*With strong striations*



## The 1834 Eight Doubles

With a mintage of 231,760 there are two different types of the 1834 eight doubles. The coins were minted between 1834 and 1839.

### Die Varieties

Type	Additional Source	Variety
1*	Pridmore 1 Exley E98 McCammon G1 i	Right leaf on sprig almost touches shield
2	McCammon G1 ii	Separation more defined

**1834 Eight Doubles Common Reverse**





**1834 Eight Doubles Type 2 Obverse**



*Separation more defined*

## The 1858 Eight Doubles

With a mintage of 111,469 there are at least three different obverse dies along with two different reverse dies of the 1858 Eight Doubles for a combination of three different types.

### Die Varieties

Type	Additional Source	Variety
1	Pridmore 3 Exley E8 McCammon G2 i	4 berries; reverse large bow
2	Pridmore 2 Exley E7 McCammon G2 ii	5 berries, top berry's stem attached to main branch; reverse has large bow
3	Exley E7A	5 berries, top berry's stem comes from top leaf; reverse has squished bow



## 1858 Eight Doubles Die Pairings



*The different types*



## 1858 Eight Doubles Obverse Notes



*On the left laurel branch there is an extra berry to the left of the bow on the types 2 and 3 obverse dies.*



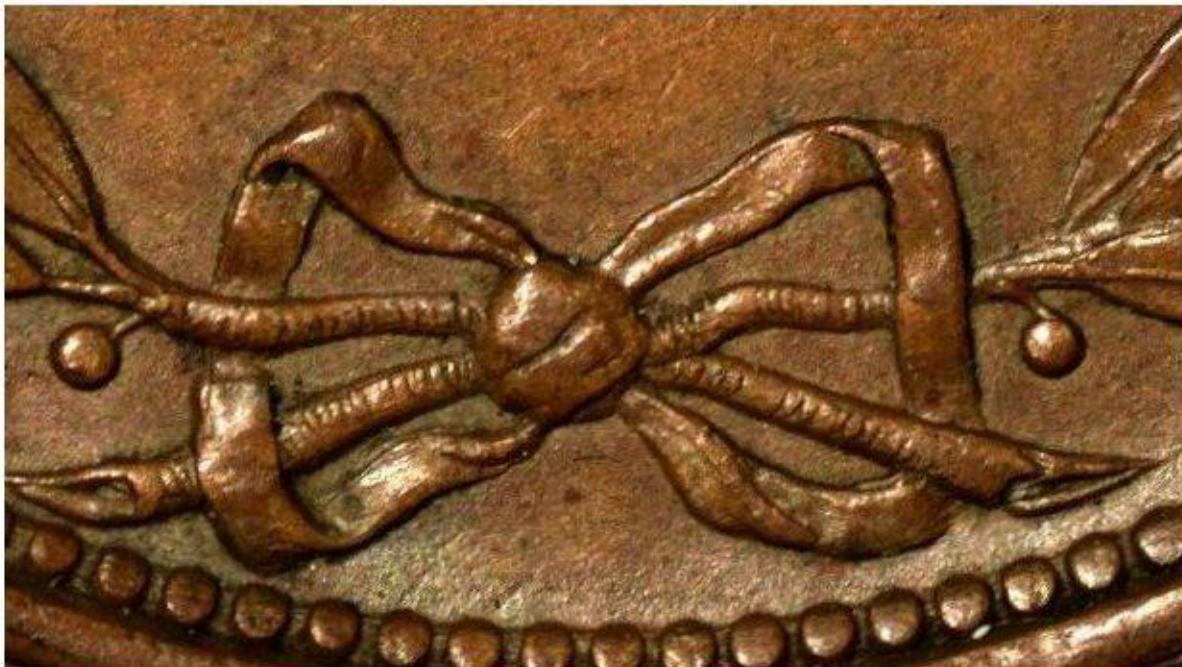
## 1858 Eight Doubles Obverse Notes



*On the left laurel branch note the stem for the top berry. For types 1 and 2, the berry's stem emerges behind the leaf, while for type 3 the berry comes from the main branch.*



## 1858 Eight Doubles Reverse Notes



*There are two different reverse dies. The first has the top of the bow squashed down. The second does not.*



## The 1864 Eight Doubles

With a mintage of 284,736 there are at least five different obverse dies along with five different reverse dies of the 1864 Eight Doubles for a combination of 11 different types.

### Die Varieties

Type	Additional Source	Variety
1	Pridmore 58 Exley E98 McCammon G3 i	1-A
2	Pridmore 58 McCammon G3 ii	2-A
3	Pridmore 58 McCammon G3 iii	2-A*
4	Pridmore 58 McCammon G3 iv	2-B
5	Pridmore 58 McCammon G3 v	3-B
6	Pridmore 58 McCammon G3 vi	3-C
7	Pridmore 58 McCammon G3 vii	3a-C
8	Pridmore 58	3-D

<b>Type</b>	<b>Additional Source</b>	<b>Variety</b>
	McCammon G3 viii	
9	Pridmore 58 McCammon G3 ix	4-D
10	Pridmore 58 McCammon G3 ixa	4-D1
11	Pridmore 58 McCammon G3 x	5-E



## The 1868 Eight Doubles

With a mintage of 54,720 there are at least four different types of the 1868 Eight Doubles.

### Die Varieties

Type	Source	Variety
1	Pridmore 14 McCammon G5i Exley E35	<i>Obverse:</i> Left: 12 Leaves 3-4-1-4; berries 2-1-1-1 Right: 11 Leaves 2-1-4-4; berries 1-1-2-1 <i>Reverse:</i> Left: 13 Leaves 3-3-4-3; berries 2-2-2-1 Right: 13 leaves 3-3-3-4; berries 2-2-2-1
2*	Exley E27 modified stem McCammon G4ii	<i>Obverse:</i> Left: 11 leaves 3-4-4; berries 2-2-1 Right: 11 leaves 2-1-4-4; berries 1-1-2-1 Right branch difference
3*	McCammon G4iii	<i>Obverse:</i> Left: 12 leaves 3-5-4; berries 2-2 Right: 11 leaves 2-1-4-4; berries 1-1-2-1

**1868 Eight Doubles Types 1-3 Obverse**



**Type 1**



**Type 2**



**Type 3**





**1868 Eight Doubles Common Reverse**



*Left: 13 leaves 3-3-4-3; berries 2-2-2-1*

*Right: 12 leaves 3-3-3-3; berries 2-2-2-1*



**1868 Eight Doubles Type 1 Obverse**



*Left: 11 leaves 3-4-4; berries 2-2-1*

*Right: 11 leaves 2-1-4-4; berries 1-1-2-1*



**1868 Eight Doubles Type 2 Obverse**



*Left: 11 leaves 3-4-4; berries 2-2-1*

*Right: 11 leaves 2-1-4-4; berries 1-1-2-1*



**1868 Eight Doubles Type 3 Obverse**



*Left: 12 leaves 3-5-4; berries 2-2*

*Right: 11 leaves 2-1-4-4; berries 1-1-2-1*



## 1868 Eight Doubles Obverse Left Branch



*A trace of extra leaves can be found on the obverse die used for Types 1 and 2. Also note that berry 5 is in the middle of the stem. Note the positioning of the last two berries for Type 3, which only has 11 leaves.*

## The 1874 Eight Doubles

With a mintage of 73,248 there are at least 4 different types of the 1874 Eight Doubles.

### Die Varieties

Type	Source	Variety
1	Pridmore 14 McCammon G5i Exley E35	<i>Obverse:</i> Left: 12 Leaves 3-4-1-4; berries 2-1-1-1 Right: 11 Leaves 2-1-4-4; berries 1-1-2-1 <i>Reverse:</i> Left: 13 Leaves 3-3-4-3; berries 2-2-2-1 Right: 13 leaves 3-3-3-4; berries 2-2-2-1
2	Exley E36 McCammon G5ii	<i>Obverse:</i> Left: 12 Leaves 3-4-1-4; berries 2-1-1-1; Right: 11 Leaves 2-1-4-4; berries 1-1-2-1 <i>Reverse:</i> Right: 12 Leaves 3-3-3-3; berries 2-2-2-1
3	Pridmore 16 Exley E37 McCammon G5iii	<i>Obverse:</i> Left: 12 Leaves 3-5-4; berries 2-2-1; Right: 11 Leaves 2-1-4-4; berries 1-1-2-1 <i>Reverse:</i> Left: 13 Leaves 3-3-4-3; berries 2-2-2-1 Right: 13 leaves 3-3-3-4; berries 2-2-2-1



4*	Exley E38	<p><i>Obverse:</i></p> <p>Left: 11 Leaves 3-4-4; berries 2-2-1; Right: 11 Leaves 2-1-4-4; berries 1-1-2-1</p> <p><i>Reverse:</i></p> <p>Left: 13 leaves 3-3-4-3; berries 2-2-2-1 Right: 12 leaves 3-3-3-3; berries 2-2-2-1</p>
----	-----------	--

**1874 Eight Doubles Die Parings**





**1874 Eight Doubles Type 1 Obverse**



*Left: 12 Leaves 3-4-1-4; berries 2-1-1-1*

*Right: 11 Leaves 2-1-4-4; berries 1-1-2-1*



**1874 Eight Doubles Type 1 Reverse**



*Left: 13 Leaves 3-3-4-3; berries 2-2-2-1*

*Right: 13 Leaves 3-3-3-4; berries 2-2-2-1*



**1874 Eight Doubles Type 2 Obverse**



*Left: 12 Leaves 3-4-1-4; berries 2-1-1-1;*  
*Right: 11 Leaves 2-1-4-4; berries 1-1-2-1*



**1874 Eight Doubles Type 2 Reverse**



*Left: 13 Leaves 3-3-4-3; berries 2-2-2-1*

*Right: 12 Leaves 3-3-3-3; berries 2-2-2-1*



**1874 Eight Doubles Type 3 Obverse**



*Left: 12 Leaves 3-5-4; berries 2-2-1;*

*Right: 11 Leaves 2-1-4-4; berries 1-1-2-1*



**1874 Eight Doubles Type 3 Reverse**



*Left: 13 Leaves 3-3-4-3; berries 2-2-2-1*

*Right: 12 Leaves 3-3-3-3; berries 2-2-2-1*



**1874 Eight Doubles Type 4 Obverse**



*Left: 11 Leaves 3-4-4; berries 2-2-1;*

*Right: 11 Leaves 2-1-4-4; berries 1-1-2-1*



**1874 Eight Doubles Type 4 Reverse**



*Left: 13 Leaves 3-3-4-3; berries 2-2-2-1;  
Right: 12 Leaves 3-3-3-3; berries 2-2-2-1*



## 1874 Eight Doubles Obverse Left Branch



*"Numismatics, like some aspects of astronomy and natural history, remains a branch of learning in which the amateur can still do valuable work, and it is on the great collecting public, or rather on that part of which is interested in the subject at a scientific level, that the progress of numismatic science largely depends."*

Philip Grierson - Professor of Numismatics, University of Cambridge

*A trace of extra leaves can be found on the obverse die used for the coin Types 1 and 2. Also note that berry 5 is in the middle of the stem. Note the positioning of the last two berries for Type 4, which only has 11 leaves.*

## 1874 Eight Doubles Obverse Right Branch



*On the right laurel branch of the second obverse die (used for the Type 3 coin), the tip of leaf 8 and berry 4 overlap. For the third obverse die (the Type 4 coin), the top two leaves do not overlap.*



**1874 Eight Doubles Reverse Left Branch**



*Note the differences, especially with the grouping of 4 leaves for all four dies.*

*(Shown are reverse dies 1 and 2.)*



**1874 Eight Doubles Reverse Left Branch**



*Note the differences, especially with the grouping of 4 leaves.*

*(Shown are reverse dies 3 and 4.)*



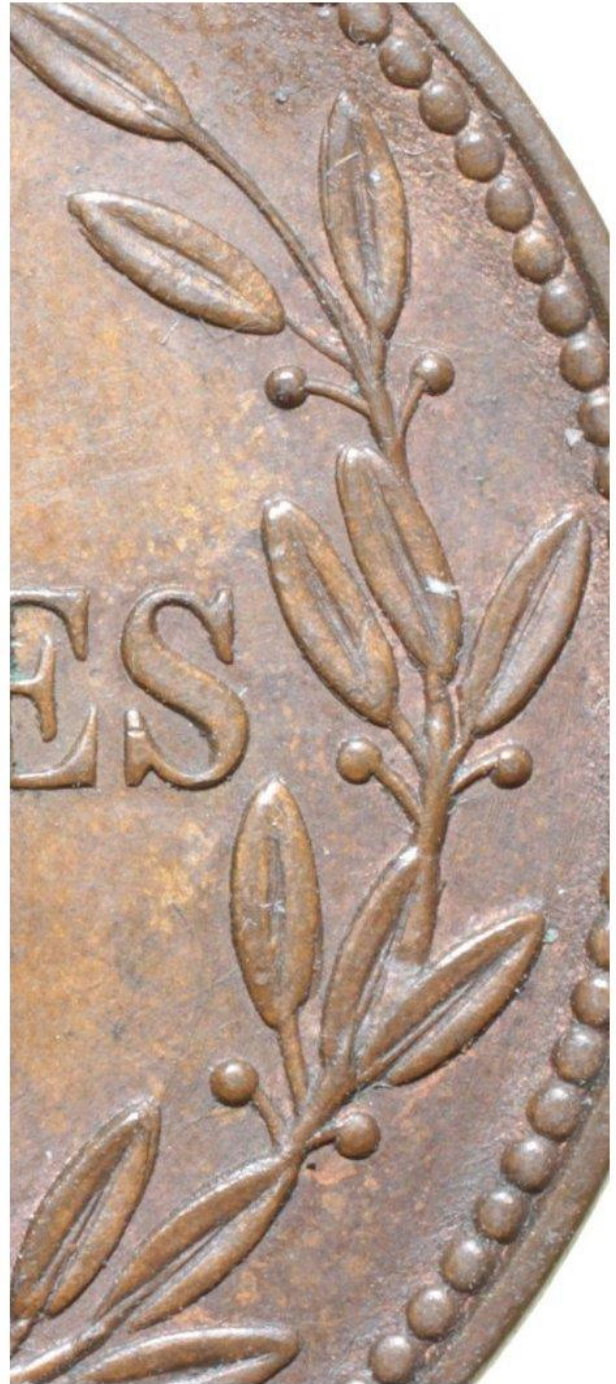
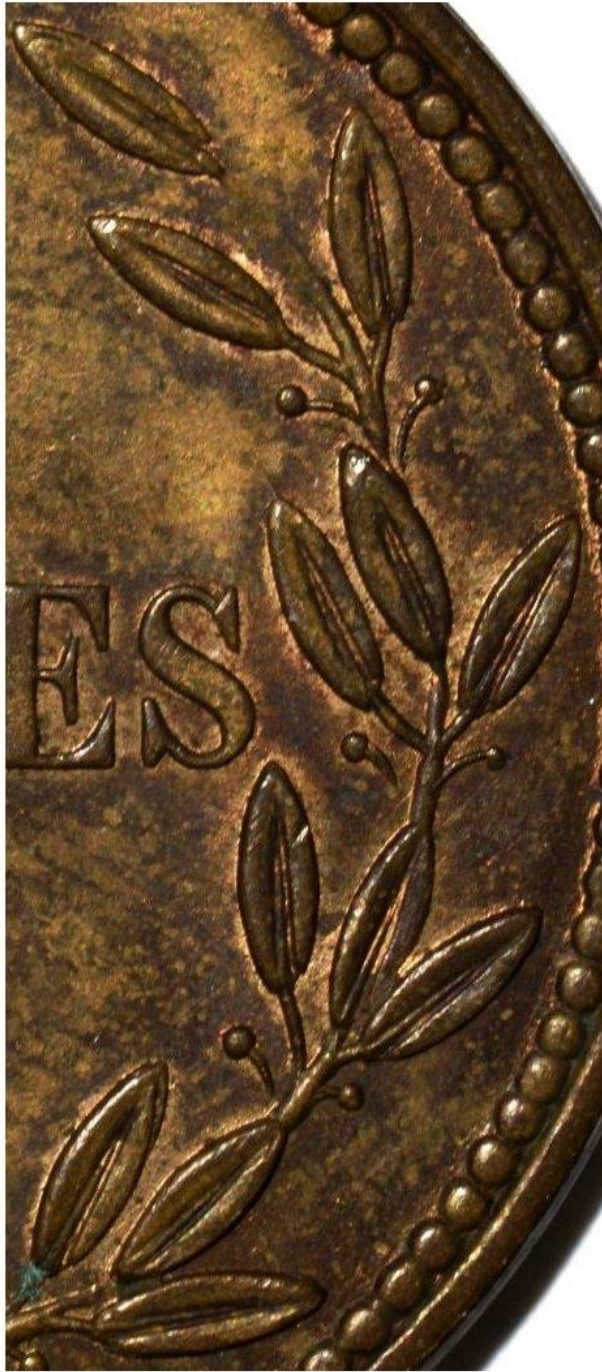
## 1874 Eight Doubles Reverse Right Branch



*Note the differences on the right branch. The first reverse die (used on the Type 1 coin) has 13 leaves, compared to 12 for the others. Also note that the second reverse die (for the Type 2 coin) has a ghost leaf that nearly touches the S of DOUBLES.*



**1874 Eight Doubles Reverse Right Branch**



*Note the differences on the right laurel branch, with the orientation of the last set of 3 leaves along with the last two berries for coin Types 3 and 4.*



## The 1885 Eight Doubles

With a mintage of 69,696 there are at least three different types of the 1885 Eight Doubles. The last type is found on a proof example.

### Die Varieties

Type	Additional Source	Variety
1	Pridmore 19 Exley E98 McCammon G6 i	Right third leaf joined on main stem
2	McCammon G6 ii	Right third leaf joined on berry stem
3*		Left stem differences (found on a proof coin)

**1885 Eight Doubles Common Reverse**





**1885 Eight Doubles Type 1**



*Right third leaf joined to main stem*



**1885 Eight Doubles Type 2**



*Right third leaf joined to berry stem*



**1885 Eight Doubles Proof Type 3**



*Left Branch Differences*



### 1885 Eight Doubles Left Branch



Note the stem emerging from the four leaves for the type 1 and 2 coins.  
On the type 3 coin, the stem merges from a leaf.



## 1885 Eight Doubles Right Branch



On the type 2 coin, the right third leaf is joined by a berry stem.



Also, on the type 1 and 2 coins, the bottom left leaf has been reworked.

## The 1889 Eight Doubles

The Guernsey eight doubles of 1889 was minted at the Heaton Mint in Birmingham. It also has a small mintage of only 222,096 pieces.

### Die Varieties

Type	Additional Source	Variety
1	McCammon G7 i	Normal spacing between 8 and 9 at 0.5 mm
2	McCammon G7 ii	Normal spacing between 8 and 9 at 0.4 mm 9 slightly raised
3	McCammon G7 iii	Normal spacing between 8 and 9 at 0.25 mm 9 slightly raised
4	McCammon G7 iv	Normal spacing between 8 and 9 at 0.55 mm 9 markedly raised



**1889 Eight Doubles Common Obverse**







8

DOUBLES

1889



## The 1893 Eight Doubles

The Guernsey eight doubles of 1893 was minted at the Heaton Mint in Birmingham. It also has a small mintage of only 117,600 pieces. A variety of these coins has larger letters for DOUBLES and larger date figures. It is my opinion that the larger date is the harder one to find.

### Die Varieties

Type	Additional Source	Variety
1*	Pridmore 21 Exley E53 McCammon G8 i	Large date/letters Note the old style of the number 8.
2	Exley E52 McCammon G8 ii	Small date/letters Note the new style of the number 8.

**1893 Eight Doubles Common Obverse**





**1893 Eight Doubles Type 1 Reverse**



*Large date/letters*

*Note the old style of the number 8.*

**1893 Eight Doubles Type 2 Reverse**



*Small date/letters*

*Note the new style of the number 8.*



Two varieties exist for the Guernsey 1893 Eight Doubles coin. Varieties can be determined by comparing the 8 in 1893 or the size of the letters (especially the L and the E).



*Large Date.*



*Small Date.*

## The 1902 Eight Doubles

With a mintage of 235,200 there are at least four different types of the 1902 Eight Doubles.

### Die Varieties

Type	Additional Source	Variety
1	Pridmore 22 Exley E59 McCammon G9 i	9 slightly lower; spacing between 0 and 2: 0.8 mm
2*	McCammon G9 ii	02 lower; spacing between 0 and 2: 0.7 mm
3	McCammon G9 iii	02 lower; spacing between 0 and 2: 0.5 mm
4*	McCammon G9 iv	902 lower; spacing between 0 and 2: 0.4 mm



**1902 Eight Doubles Common Obverse**





**1902 Eight Doubles Type 1**



*9 slightly lower; spacing between 0 and 2: 0.8 mm*



**1902 Eight Doubles Type 3**



*02 lower; spacing between 0 and 2: 0.5 mm*

## The 1903 Eight Doubles

With a mintage of 117,600 there are at least four different types of the 1903 Eight Doubles.

### Die Varieties\*

Type	Additional Source	Variety
1	Pridmore 23 Exley E64 McCammon G10 i	9 raised; spacing between 9 and 0: 0.7 mm
2	McCammon G10 ii	Date regular; spacing between 9 and 0: 0.6 mm
3	McCammon G10 iii	0 lower; spacing between 9 and 0: 0.5 mm
4	McCammon G10 iv	0 raised; spacing between 9 and 0: 0.5 mm



**1903 Eight Doubles Common Obverse**





**1903 Eight Doubles**





## The 1910 Eight Doubles

With a mintage of 91,467 there are at least two different types of the 1910 Eight Doubles.

### Die Varieties

Type	Additional Source	Variety
1	Pridmore 24 Exley E70 McCammon G11 i	Letters of GUERNSEY Deteriorating
2	McCammon G11 ii	Letters of GUERNSEY Repaired

**1910 Eight Doubles Common Obverse**





**1910 Eight Doubles**



## The 1911 Eight Doubles

With a mintage of 78,400 there are at least two different types of the 1911 Eight Doubles.

### Die Varieties

Type	Additional Source	Variety
1	Pridmore 25 Exley E75 McCammon G12 i	Narrow Date, Letters of GUERNSEY Deteriorating
2	McCammon G12 ii	Wide Date, Letters of GUERNSEY Repaired



**1911 Eight Doubles Common Obverse**





**1911 Eight Doubles**





## The 1918 Eight Doubles

With a mintage of 156,800 there are at least two different types of the 1914 Eight Doubles.

### Die Varieties

Type	Additional Source	Variety
1	Pridmore 27 Exley E86 McCammon G14 i	Narrow date
2	McCammon G14 ii	Wide date

**1918 Eight Doubles Common Obverse**





**1918 Eight Doubles**



## The 1920 Eight Doubles

With a mintage of 156,800 there are at least two different types of the 1920 Eight Doubles.

### Die Varieties

Type	Additional Source	Variety
1	Pridmore 28 Exley E86 McCammon G15 i	Narrow date; 2 crooked
2	McCammon G15 ii	Wide date; 0 raised



**1920 Eight Doubles Common Obverse**





**1920 Eight Doubles Type 1 Reverse**



*Narrow date; 2 crooked*



## The 1934 Eight Doubles

With a mintage of 123,600 there are at least two different types of the 1934 Eight Doubles.

### Die Varieties

Type	Additional Source	Variety
1	Pridmore 29 Exley E91 McCammon G16 i	Normal date
2	Exley E91A McCammon G16 ii	Raised 9

**1934 Eight Doubles Common Obverse**





**1934 Eight Doubles Type 2 Obverse**



*Raised 9*

## The 1938 Eight Doubles

With a mintage of 180,000 there are at least two different types of the 1938 Eight Doubles. Note Exley and Pridmore state the mintage as 120,000.

### Die Varieties

Type	Additional Source	Variety
1*	Pridmore 31 Exley E94 McCammon G17 i	Normal date
2	McCammon G17 ii	Raised 1 in date



**1938 Eight Doubles Common Obverse**



**1938 Eight Doubles Type 2**



*Raised 1 in date.*



## The 1947 Eight Doubles

With a mintage of 240,000 there are three different types of the 1947 eight doubles.

### Die Varieties

Type	Additional Source	Variety
1	Pridmore 33 Exley E98 McCammon G19 i	Normal shield
2	McCammon G19 ii	Center of shield repaired
3*	McCammon G19 iii	Wear at center of shield

**1947 Eight Doubles Type 1**



*Normal shield*



**1947 Eight Doubles Type 2**



*Center of shield repaired.*