

## The Guernsey 1874 Eight Doubles

With a mintage of 73,248 there are at least 4 different types of the 1874 Eight Doubles.

### Die Varieties

Type	Source	Variety
1	Pridmore 14 McCammon G5i Exley E35	<i>Obverse:</i> Left: 12 leaves 3-4-1-4; berries 2-1-1-1 Right: 11 leaves 2-1-4-4; berries 1-1-2-1 <i>Reverse:</i> Left: 13 Leaves 3-3-4-3; berries 2-2-2-1 Right: 13 leaves 3-3-3-4; berries 2-2-2-1
2	Pridmore 16 McCammon G5ii	Same as above. <i>Reverse:</i> Right: 12 Leaves 3-3-3-3; berries 2-2-2-1
3	Exley E37 McCammon G5iii	<i>Obverse:</i> Left: 12 leaves 3-5-4; berries 2-2-1 Right: 11 leaves 2-1-4-4; berries 1-1-2-1 (Leaf 8 touches berry 4) <i>Reverse:</i> Left: 13 Leaves 3-3-4-3; berries 2-2-2-1 Right: 13 leaves 3-3-3-4; berries 2-2-2-1
4	Exley E38 Withers Squished	<i>Obverse:</i> Left: 11 leaves 3-4-4; berries 2-1-1-1 (Squished last berry ) Right: 11 leaves 2-1-4-4; berries 1-1-2-1 <i>Reverse:</i> Left: 13 leaves 3-3-4-3; berries 2-2-2-1 Right: 12 leaves 3-3-3-3; berries 2-2-2-1





**1874 Type 1 Obverse**



**Left: 12 Leaves 3-4-1-4; berries 2-1-1-1  
Right: 11 Leaves 2-1-4-4; berries 1-1-2-1**



**1874 Type 1 Reverse**



**Left: 13 Leaves 3-3-4-3; berries 2-2-2-1  
Right: 13 Leaves 3-3-3-4; berries 2-2-2-1**



**1874 Type 2 Obverse**



**Left: 12 Leaves 3-4-1-4; berries 2-1-1-1;  
Right: 11 Leaves 2-1-4-4; berries 1-1-2-1**



**1874 Type 2 Reverse**



**Left: 13 Leaves 3-3-4-3; berries 2-2-2-1**  
**Right: 12 Leaves 3-3-3-3; berries 2-2-2-1**



**1874 Type 3 Obverse**



**Left: 12 Leaves 3-5-4; berries 2-2-1;  
Right: 11 Leaves 2-1-4-4; berries 1-1-2-1**



**1874 Type 3 Reverse**



**Left: 13 Leaves 3-3-4-3; berries 2-2-2-1  
Right: 12 Leaves 3-3-3-3; berries 2-2-2-1**



**1874 Type 4 Obverse**



**Left: 11 Leaves 3-4-4; berries 2-2-1;  
Right: 11 Leaves 2-1-4-4; berries 1-1-2-1**



**1874 Type 4 Reverse**



**Left: 13 Leaves 3-3-4-3; berries 2-2-2-1;  
Right: 12 Leaves 3-3-3-3; berries 2-2-2-1**



## Obverse Left Branch



*"Numismatics, like some aspects of astronomy and natural history, remains a branch of learning in which the amateur can still do valuable work, and it is on the great collecting public, or rather on that part of which is interested in the subject at a scientific level, that the progress of numismatic science largely depends."*

Philip Grierson - Professor of Numismatics, University of Cambridge

*A trace of extra leaves can be found on the obverse die used for the coin Types 1 and 2. Also note that berry 5 is in the middle of the stem. Note the positioning of the last two berries for Type 4, which only has 11 leaves.*



## Obverse Right Branch



*On the right laurel branch of the second obverse die (used for the Type 3 coin), the tip of leaf 8 and berry 4 overlap. For the third obverse die (the Type 4 coin), the top two leaves do not overlap.*



## Reverse Left Branch



*Note the differences, especially with the grouping of 4 leaves for all four dies.  
(Shown are reverse dies 1 and 2.)*



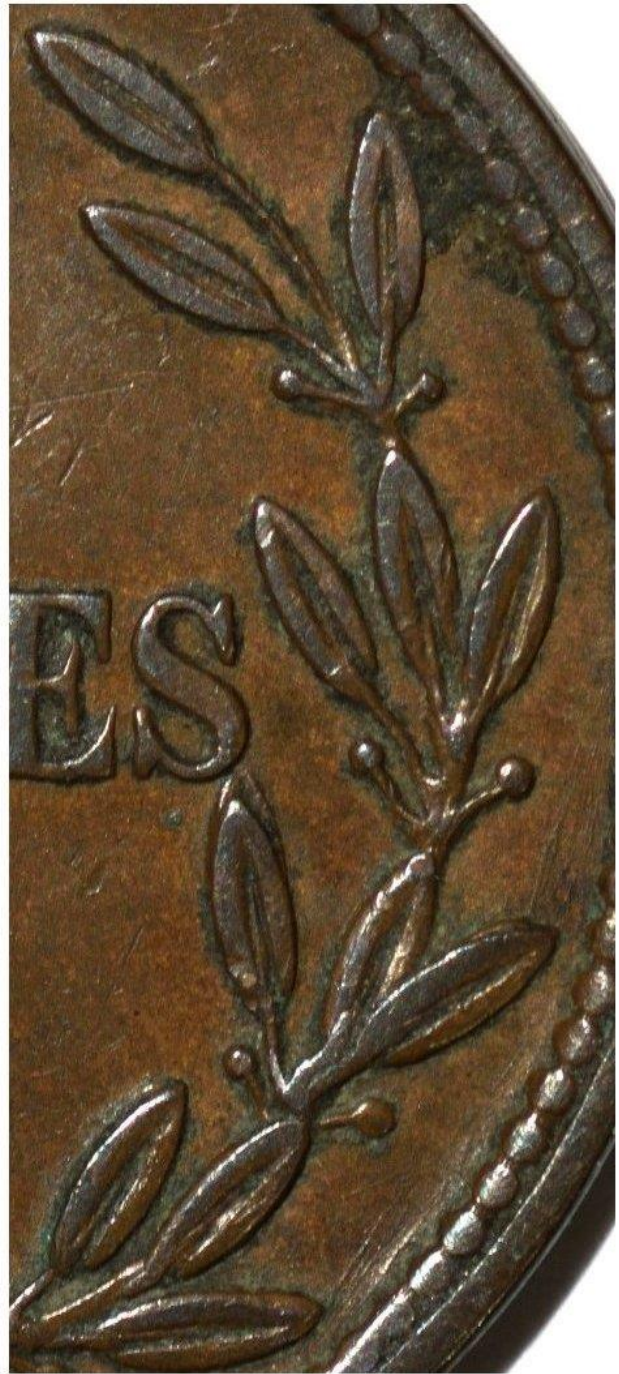
## Reverse Left Branch



*Note the differences, especially with the grouping of 4 leaves.  
(Shown are reverse dies 3 and 4.)*



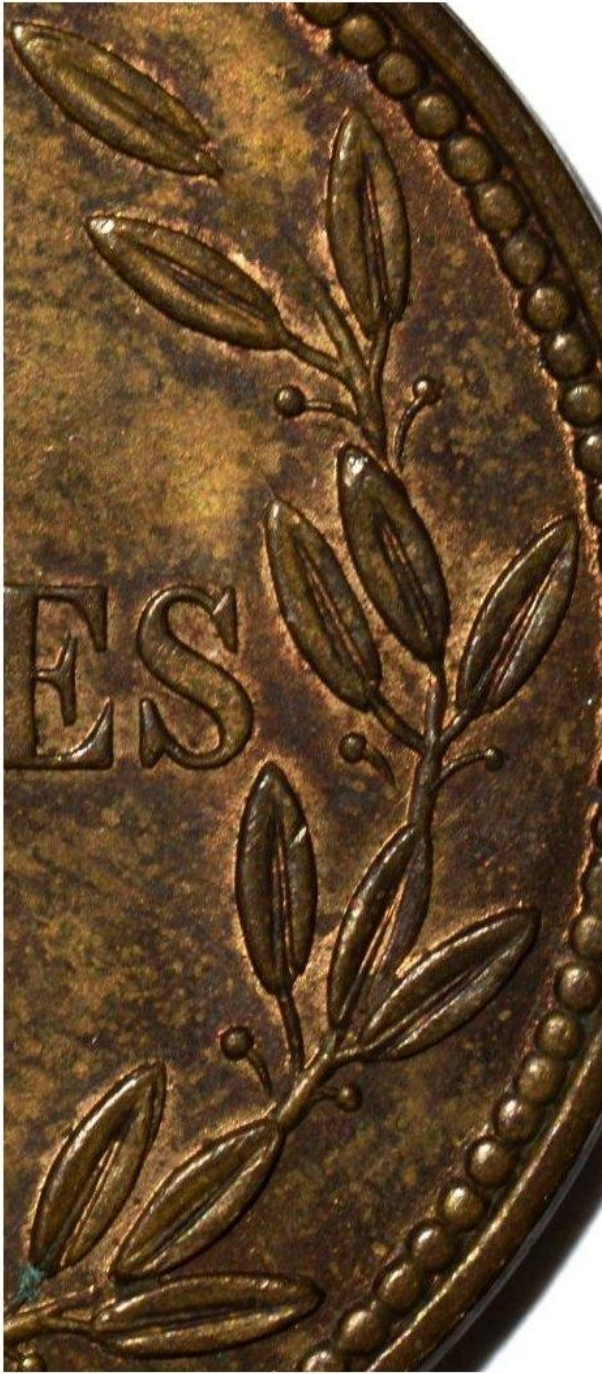
## Reverse Right Branch



*Note the differences on the right branch. The first reverse die (used on the Type 1 coin) has 13 leaves, compared to 12 for the others. Also note that the second reverse die (for the Type 2 coin) has a ghost leaf that nearly touches the S of DOUBLES.*



## Reverse Right Branch



*Note the differences on the right laurel branch, with the orientation of the last set of 3 leaves along with the last two berries for coin Types 3 and 4.*